

Our
Perfect
Posture
Range

 **selfsure**
your pro-active approach to lifestyle changes

REST & RELAX

Latest Designs • Fair Pricing Guarantee • Full Needs Assessment



Helps with Bad Backs, Poor Circulation, Joint Pain, Aches and Pains, Poor Sleep, Numbness

www.self-sure.co.uk

Welcome to Selfsure



Welcome to SelfSure

Thank you for taking the time to read our latest brochure. As well as offering a great range of British products, SelfSure wants its Customers to understand the importance of assessment to ensure your product of choice, gives you good posture as well as meeting your current and future requirements.

Beds

Help to choose the right bed	4
Adjustable bases	5-11
Bed Linen and Care Kits	10
Divan Bases	12
Headboards	13
Mattresses	14-17

Chairs

Help to choose the right chair	18-20
Rise and Recline Chairs	21-28
Fast Track Delivery	24
Accessories and Upgrades	28
Matching Furniture	29

Handy Information

Meet the Team	30
How to Order	31
Other Products	32

Why can chairs and beds be classed as medical devices?

Some adjustable chairs and beds are manufactured with the intention of helping people with health conditions, chronic sickness and disabilities.

The government allows these products to be sold exempt of VAT provided you qualify, that is, if you have a health condition, chronic illness or disability. This means these products are classed as medical devices and come under the watchful eye of the Medicines and Healthcare products Regulatory Agency.

What you need to know

When a chair or bed is classed as a medical device, it surely means that it can help you in some way. No, they are not a cure and yes they can help with the relief of certain symptoms on a temporary basis including aches and pains. A much greater benefit is that of good posture.

Purchasing a product that can help you achieve and maintain good posture is a great decision to make, in that, it will help in so many ways: circulation, pins and needles, numbness; back, neck and joint support; relief from aches and pains; digestion; comfort, rest and quality sleep; leading to an overall sense of improved well-being and energy.

Adjustable furniture makes a great deal of sense when considering good posture as well as your current and future health. If you're uncomfortable, you are only a press of a button away from good posture.

There is, however, a downside. The risk is choosing a wrong sized product, which will undo all the potential benefits and in many cases cause you more harm than good. Stiffness, numbness, aches and pains can all be attributed to the wrong sized product.

Talk to your friendly Personal Advisor and get a full assessment of your needs and choose the product that is right for you.

Government Policy

We are an ageing population and therefore a population which requires more help and care. The government cannot afford to fund the future financial demands on public health and therefore, policy is aimed at keeping people living in their own homes.

In the main, older Adults want to live in their own homes for life. A goal generally shared by their families, friends and neighbours. In order to achieve this goal it makes sense to invest in products that will support you in this aim; products that are future proof and will remain of value as you age.

This is why SelfSure has always promoted a pro-active approach to ageing and dealing with health conditions and is passionate about offering full assessments to its customers to ensure we help you choose the right product.

The importance of quality sleep for older adults

As we age, we often experience normal changes in our sleeping patterns. We may become sleepier earlier, wake up earlier, and enjoy less deep sleep.

However, disturbed sleep, waking up tired every day, and other symptoms of insomnia are not a normal part of aging. Sleep is just as important to our physical and emotional health in our senior years as it was when we were younger.

No matter what your age, sleeping well is essential to your physical health and emotional well-being. For seniors, a good night's sleep is especially important because it helps improve concentration and memory formation, allows your body to repair any cell damage that occurred during the day, and refreshes your immune system, which in turn helps to prevent disease.

It appears that it is more important to focus more on how you feel following a night's sleep, rather than the specific number of hours you spend asleep. Quality is as important as quantity. Investing in a quality bed and in particular, a quality adjustable bed is all to do with achieving good posture whilst you sleep. Good posture takes pressure off your organs, helps you to breathe properly and therefore reduces snoring, aids digestion and blood circulation and ultimately reduces the amount you need to toss and turn. You may also benefit from temporary relief from joint and muscle pain, swelling, water retention and so on.

To get good quality sleep, you need to achieve good posture!

Top Tips

- Check the overall height of the bed to ensure you can get on and off it easily and safely
- Think about not only what may be suitable today, but what will also be suitable in the years to come

BEDS ICON KEY



Memory foam - provides pressure relief by evenly distributing the bodyweight across the entire surface.



Pocket sprung - each pocket spring reacts separately to pressure applied, supporting body weight individually, rather than spreading body weight across the surface of the mattress. This promotes a more restful night's sleep.



Latex - contours to the body and offers optimal temperature and moisture control. Latex is naturally anti-bacterial, anti-fungal and dustmite resistant and offers excellent durability.



Adaptive - intelligent textile technology that responds to changes in temperature and moisture levels.



Single sided mattress - we recommend that you rotate a single sided mattress head to toe every fortnight for the first three months, then every other month thereafter.



Manufactured in Britain - The act of buying British goods is great news for the UK economy. When you buy British, you are investing in skilled craftsmanship that has been handed down through the generations and better quality goods – whilst helping to secure the future for British manufacturers.



Salisbury

Choose your ideal bed base



Salisbury

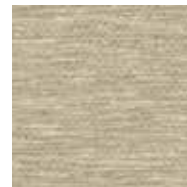
- 5 panel wall hugger action with two lift motors for the upper and lower body
- Zero Gravity feature putting you in a position where less pressure is being exerted on the body
- Unique anti snore position
- Wireless handset which has an inbuilt torch
- Memory motor to save your favourite positions
- Massage unit built into the panel
- Under-bed lighting
- USB port to charge your smart phone or tablet
- Upholstered mattress retainer board
- Supplied as base only, matching headboard available
- Available in a selection of fabrics
- Widths: 3'0, 4'0, 4'6, 5'0, 6'0 and dual



Choice of Fabric



Desire Beige



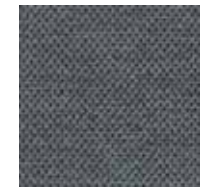
Ronnie Beige



Ronnie Brown



Leamington Dove



Ronnie Grey



Leamington Blue

Mirage

Choose your ideal bed base



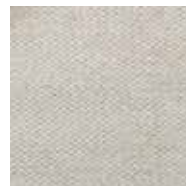
Mirage

A popular feature of the Mirage base is that it does not actually look like an adjustable bed when in the lowered position. The fully upholstered base has feature piping to the top and bottom to complete the illusion.

- Upholstered mattress retainer
- Fully upholstered 5 panel action
- Memory motor with backlit corded remote
- Option to upgrade to add an end drawer
- Supplied as base only, matching headboard available
- Available in a selection of fabrics
- Choice of mattresses
- Widths: 3'0, 4'0, 5'0, 6'0 and dual



Choice of Fabric



Desire Beige



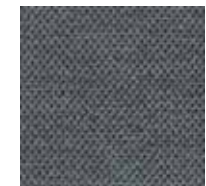
Ronnie Beige



Ronnie Brown



Leamington Dove



Ronnie Grey



Leamington Blue

Tuscany

Choose your ideal bed base



Tuscany

Not only does the Tuscany have unique functions, such as a useful backlit memory handset or a 25 stone handling ability, this stunning adjustable bed also looks magnificent. With its innovative design and technical features, the Tuscany is made with quality and comfort in mind by our master craftsmen using the finest natural materials.

- Backlit memory handset
- 25 stone weight capacity
- Underbed storage available
- Zero Gravity motion
- Headboard included
- Widths: 3'0, 4'0, 4'6, 5'0, 6'0 and dual
- Choice of mattresses
- Option to upgrade to add an end drawer



Choice of Fabric



Luxury Natural



Luxury Beige



Luxury Silver Grey

Surrounds

Choose your ideal bed base

Surrounds

Our surrounds are designed for ease of access through the smallest of entry points and are a stylish alternative solution to the adjustable divan style.

- Easy assembly and handling due to 4 part construction
- Integral fully upholstered head and footboard
- Special sizes available - all in usual lead times
- Choice of fabrics
- Any mattress from select collection



Classic



Deluxe



Choice of Fabric

The 4 part surround allows access through the smallest access points and incorporates a deep padded headboard and footboard to add a touch of elegance to any bedroom.



Desire Beige



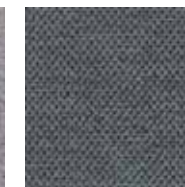
Ronnie Beige



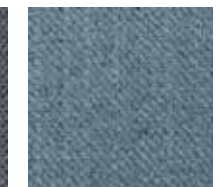
Ronnie Brown



Leamington Dove



Ronnie Grey



Leamington Blue

Executive

Choose your ideal bed base

Executive

Experience the ultimate in comfort and quality with the bodyease executive adjustable bed. Produced in the UK to the highest of standards ensuring style, elegance and above all comfort and relaxation.

- 5 way action
- Upholstered retainer bar
- Side retainer bars
- Massage system available



Optional Extras

- Double draws



Choice of Fabric



Luxury Natural



Luxury Beige



Luxury Silver Grey



Shallow Base

Choose your ideal bed base



Optional Extras

- Heavy duty frame
- Built in massage unit
- Side retaining clips



Height Adjustable Legs



Choice of Fabric



Luxury Natural



Luxury Beige



Luxury Silver Grey

Specially Formulated Care Kits

Staingard's high performance range of furniture care products lead the way in the furniture industry by offering specifically formulated solutions, creams and cleaning cloths perfect for cleaning, stain removal and surface cleaning or polishing. Easy to use, with innovative storage boxes and simple instructions, Staingard Care Kits provide special products which help protect and maintain the appearance of furniture week after week.



Bedding Pack

- Waterproof/quilted mattress protector
- 2 fitted sheets
- 2 pillow cases



Sleepwell Pack

- Calming spray
- Mattress spray
- Spot stain remover



The Hi-Lo Specialist Bed & Chair Bed

Hi-Lo Bed

Our High/Low mechanism allows the whole bed frame to be raised and lowered, allowing you to select the most suitable height for getting in or out of the bed unaided.

The five section variable adjustments provide you with a more comfortable and stable position with angles that form a head/backrest and a leg raise that creates a knee break to help stop you from sliding down the bed.

Please specify if you require your High/Low bed to be featured on skittle legs or as a full divan base.



Chair Bed

- Rotates from sleep to seated position at the touch of a button
- 125kg weight capacity
- Lockable casters
- Height adjustable
- Comes in 3ft only
- Eliminating the risk of injury to the carer that can be caused by lifting while bending
- Maintaining the independence and dignity of the user when changing positions
- Increasing the possibility of someone getting out of bed unaided with the bed helping them get in to a sitting position first



Divan Bed Base



Optional Extras

- Choice of divan heights, 14 or 16" including castors
- Solid metal, chrome-plated castors
- Unique Push-to-Open drawer system
- 2, 4 and 2+2 drawer options (additional cost)
- Choice of luxurious upholstery fabrics
- Selection of headboards (additional cost)

Choice of Mattresses

Nature's Comfort

Nature's Comfort is lovingly handcrafted for luxurious comfort and support, using the most natural and comfiest materials. there are five mattress options in the range.

- Mattress: 1000ct, 1200ct, 1700ct, 2150ct

Latex Range

The new Latex mattresses use 100% pure Latex on hand nested pocket springs to offer a comfortable and supportive mattress. Four mattress options are available.

- Mattress: 1000ct, 1500ct, 2150ct, 3000ct

Memory VR Collection

Introducing the new VR Range – a collection of luxurious memory foam mattresses on hand nested pocket springs and foam encapsulated to provide full edge to edge support. These mattresses offer varying levels of firmness and feature a Viscose cover for a softer touch. Each new VR mattress has also been treated with Adaptive to provide you with optimum temperature control.

- Mattress: 1000ct, 1500ct, 2150ct, 3000ct

Choice of Fabric



Desire Beige



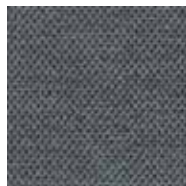
Ronnie Beige



Ronnie Brown



Leamington Dove



Ronnie Grey



Leamington Blue



Choose your Perfect Headboard

To perfectly complement your chosen bed, we have a selection of headboards available in a range of matching fabrics.



Harrow



Kingston



Lawrence



Milan



Bellingham



Jackson



Agewell Supreme Mattress Range

Choose your perfect mattress



Agewell Supreme

- Blu Cool memory foam
- Choice of soft, medium and firm tension
- Castellated support foam for support and comfort
- Quilted finish
- Hygienic cover with anti-bed bug protection which is kind to the skin
- Non turn, rotate only
- Adjustable and divan models
- Old mattress removed
- 5 year warranty



Agewell Select Mattress Range

Choose your perfect mattress



Agewell Select

- Choice of soft, medium and firm tension
- Quilted finish
- Hygienic cover with anti-bed bug protection which is kind to the skin
- None turn, rotate only
- Adjustable and divan models
- Old mattress removed
- 2 year warranty

Choice of Fillings

- Memory foam
- Pocket sprung
- Latex



Cool Gel

Choose your perfect mattress



Cool Gel Lux

Keep cooler and enjoy deeper, more comfortable sleep every night.

All these mattresses have these main benefits:

- Heavy knitted, deep quilted zip cover, infused with thermal gels
- 50mm GelAir foam adapts to your body's curves to relieve pressure points
- Resilient and hardwearing, for long lasting support
- Open cell design keeps you dry and cool by wicking away moisture and heat
- The main benefits plus 150mm support foam
- Foam encapsulated for a firmer edge. It has a deeper level of foam for a softer, squashier feel, so it will feel like your old favourite bed from day one.
- Soft feel
- 8" in depth



Cool Gel Support

Keep cooler and enjoy deeper, more comfortable sleep every night.

All these mattresses have these main benefits:

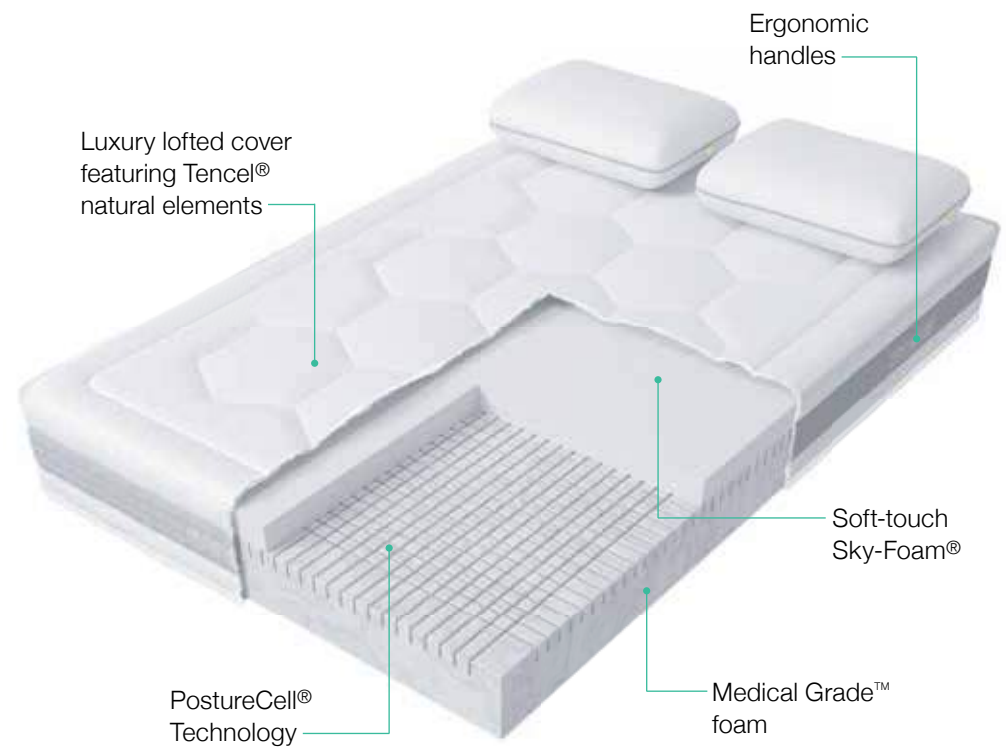
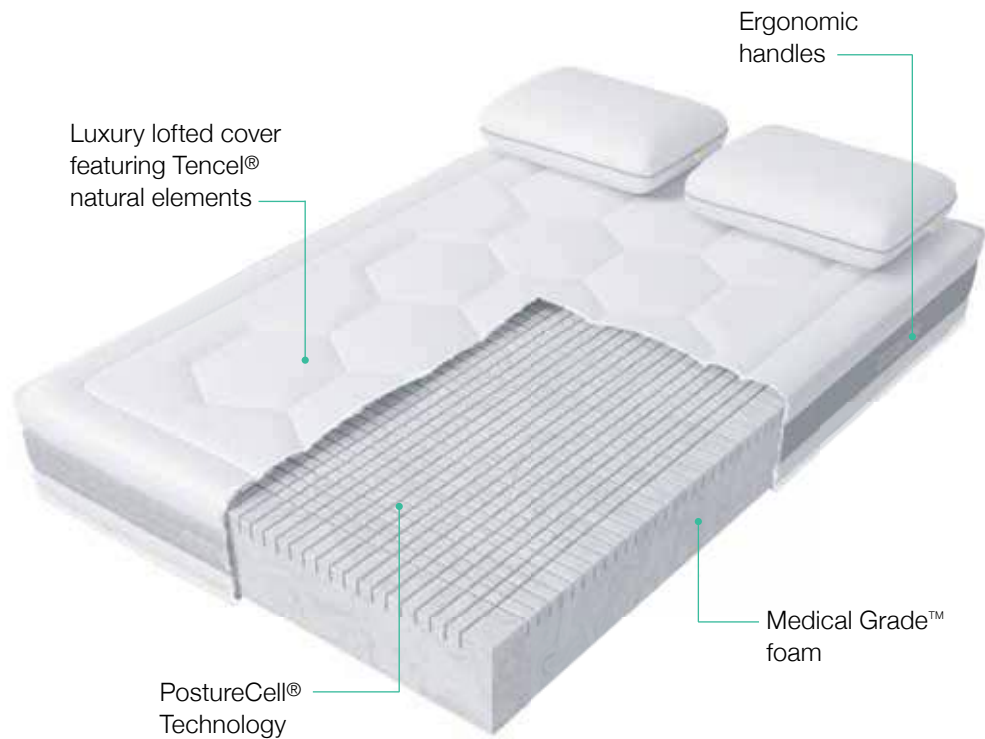
The main benefits plus 100mm support foam means you can keep cool and carry on sleeping. That's the beauty of this bed. If you struggle to sleep because you're too hot or you feel pressure on your joints, limbs and back, then this bed is for you.

- Heavy knitted, deep quilted zip cover, infused with thermal gels
- 50mm GelAir foam adapts to your body's curves to relieve pressure points
- Resilient and hardwearing, for long lasting support
- Open cell design keeps you dry and cool by wicking away moisture and heat
- Firm feel
- 8" in depth



Mammoth

Choose your perfect mattress



Move Essential Mattress

- 17cm deep
- 15cm Medical Grade™ foam
- 3 PostureCell® Zones
- Medium feel



Move Plus Mattress

- 22cm deep
- 20cm Medical Grade™ foam
- 5 PostureCell® Zones
- Medium feel



Move Advanced Mattress

- 22cm deep
- 14cm Medical Grade™ foam
- 6cm SkyFoam®
- 7 PostureCell® Zones
- Softer yet supportive feel



Choose your Posture Perfect Chair

Make a note of the following simple measurements and we'll help you choose a chair that's right for you!

Your Height:inches

Your Weight: Stones.....Pounds.....

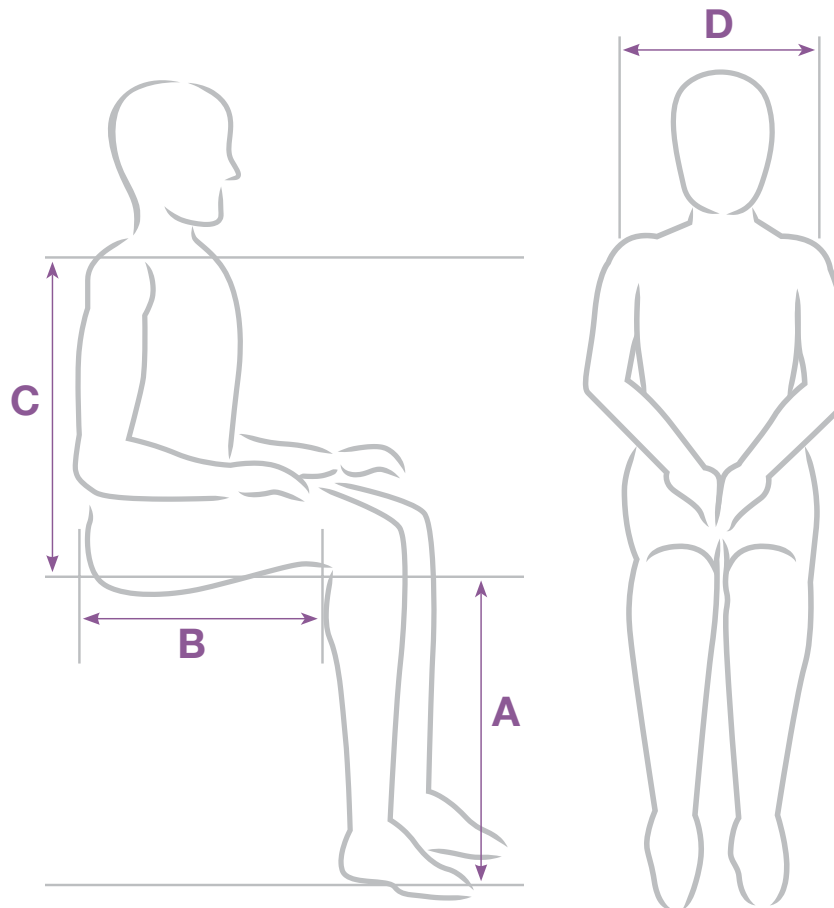
Are you Right Handed or Left Handed?.....

A Seat Height: Distance from the floor to the crease at the back of your knees.....inches

B Seat Depth: Distance from back of your hips to the crease at the back of the knees minus 1.5".....inches

C Backrest Height: Distance from your chair seat to 1" below the top of the head.....inches

D Seat Width: Distance between widest part of the hips plus an extra 3"inches



CHAIR ICON KEY



Compact option for the smaller person



Extra width, height and depth options



Matching furniture available



Tailored to fit measurements



Powered seat lift on fireside chairs



Memory foam



Manufactured in Britain

Top tip

Tilt in space

Tilt in space is the only type of action that keeps the body, hips and thighs at a constant angle. This creates good posture improving pressure relief, breathing, digestion and circulation.

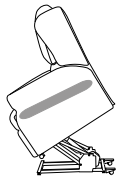
You can upgrade to a dual motor tilt in space for the ultimate in body

positioning, ensuring you do not stretch or pull the lower back. In the full recline position, you can benefit from an almost “zero gravity” position giving total support to your body. In this position you may benefit from relief from aches and pains in the lower back or legs.

Rise Recliner Mechanisms

Our mechanisms provide a unique range of sitting and recline positions, making sure you can find the perfect positions to enjoy relaxing and resting in your chair. The rise movements provide you with a little extra help to stand and walk comfortably away from your chair.

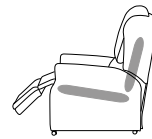
Single Motor Tilt in Space



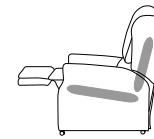
Full Rise



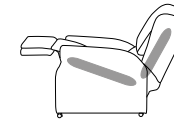
Static Position



Semi Recline

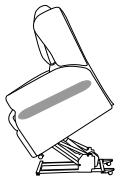


Footrest Horizontal



Fully Reclined

Dual Motor Tilt in Space



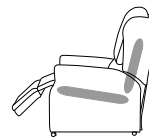
Full Rise



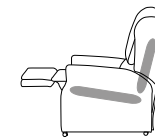
Static Position



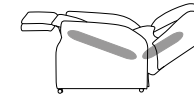
Independent Back Rest



Semi Recline

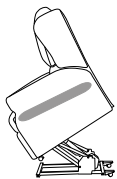


Footrest Horizontal



Fully Reclined

Standard Dual Motor



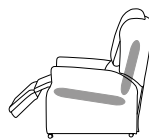
Full Rise



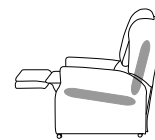
Static Position



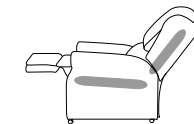
Independent Back Rest



Semi Recline



Footrest Horizontal



Fully Reclined

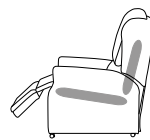
Single Motor Wallhugger



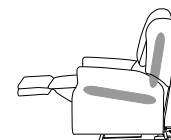
Full Rise



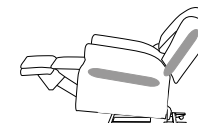
Static Position



Semi Recline



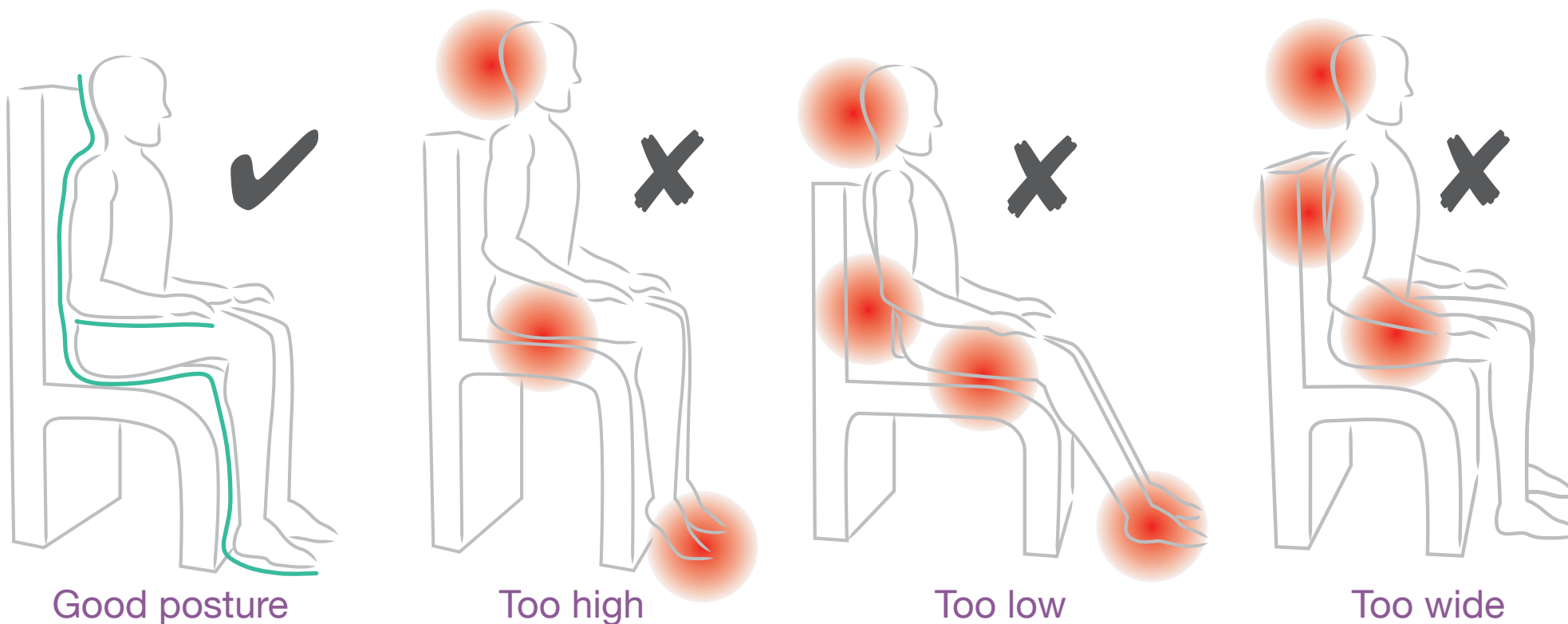
Footrest Horizontal



Fully Reclined

Rise Recliner Posture

Without good seating your health can significantly decline. Supporting poor posture can impact on digestion, respiratory tract function, dietary intake, mobility, tissue viability and general well-being.



Posture Perfect Support

Choose your posture perfect chair



Dorchester
Button



Dorchester
Split



Dorchester
Waterfall



Superbly crafted upholstery is complemented by its traditional, classic and stylish looks, with scrolled arms and elegant wings.

The ultimate in riser recliner chairs. The Dorchester is our award-winning armchair. Superbly crafted upholstery is complemented by its traditional, classic and stylish looks, with scrolled arms and elegant wings - The Dorchester is everything you could want in a riser recliner. Find your most comfortable position at the touch of the button. Available with the popular waterfall back, lateral support cushion back and letterbox back. This model is available in all 4 of our mechanisms and 3 different sizes to suit all of your needs.



Rise & Recliners

Choose your posture perfect chair



The Buxton

Dual motor lift chair with a power headrest and powered lumbar support.

The Buxton is a luxurious dual motor lift chair with a unique letterbox back, extended footrest, and powered lumbar support and headrest. Available in a variety of colours, The Buxton is the latest edition to the Hudson Range.

Features including:

- Comfortable letterbox style backrest
- LED control with USB charging
- Footrest extension
- 10" powered headrest
- Infinite positions available
- Available in standard and compact sizes



The Hereford

Dual motor liftchair with a powered headrest and powered lumbar support.

Features including:

- Available in standard and compact sizes
- Back rest options: lateral or waterfall back
- Footrest extension
- Fast track: LED control with USB charging
- 10" powered headrest
- Infinite positions available
- BY SPECIAL ORDER ONLY



The Monmouth

Dual motor liftchair with a powered headrest and powered lumbar support.

BY SPECIAL ORDER ONLY

The Monmouth is a luxurious dual motor lift chair with an extended footrest and a powered lumbar support and headrest. Available in a variety of colours, The Monmouth is one of the latest editions to the Hudson Range.

Features including:

- Lateral or waterfall back
- LED Control with USB charging
- Footrest extension
- 10" powered headrest
- Infinite positions available
- Available in standard and compact sizes



Rise & Recliners

Choose your posture perfect chair

670 Chairbed

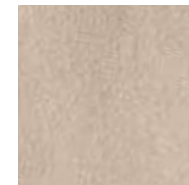
Limitless positions available and comfortable waterfall backrest.

The 670 Chairbed from 'Pride® Lift Chairs', is a dual motor lift chair and features a 27 stone weight capacity, it has a waterfall back enabling the upholstery to be easily cleaned and can be fully folded flat to be transformed into a chair bed. The 670 is available in three unique fabric options.



Ideal for people who snooze in the comfort of their current chair

Choice of Fabric



Merino Fawn



Merino fresh



Merino Latte



Rise & Recliners - Fast Track Delivery

Choose your posture perfect chair

Olympia Range

The Olympia Riser Recliner comes in three chair styles with a choice of seven standard sizes making ordering the right chair quick and simple. Its also features full length arm caps to protect and enhance the life of your chair.



Olympia
Waterfall



Olympia
Button



Olympia
Split

Ask
about our
Fast Track
Delivery

Fast Track Delivery Chairs

If you need a chair urgently, but don't want to compromise on comfort then consider our Luxury Fast Track Chairs.

Order today, before 11am and your chair will be with you in 7 working days. Our Luxury Fast Track Chairs have the option of 3 back styles shown above, 4 colours and 2 different mechanisms to optimise comfort. We have built into the chairs our luxurious top of the range pocket sprung cushion and the chair comes with matching arm covers to protect the high wear areas of your chair.

Please call us on 0800 110 5873 for further information.



Sit Right Range

Choose your posture perfect chair



Chatsworth Riser Recliner Chair

The Chatsworth Riser Recliner is designed to support and relax your back.

The Chatsworth Riser Recliner features firm foam lateral cushions that support your sides and allow your back to relax in a central position. The deep soft fibre filled head cushion provides full head and neck support.

Optional extras

- Choose from a large choice of fabrics and colours
- Made to measure
- Dual or Single motors available
- Accessorise your chair with various options
- Choose your comfort seating



Chester Riser Recliner Chair

The Chester classic riser recliner chair is tailored for luxury and comfort.

The Chester has the luxury padded lateral support back cushion, offering that snug, fitted comfort feel, whilst seated.

Optional extras

- Choose from a large choice of fabrics and colours
- Made to measure
- Dual or Single motors available
- Accessorise your chair with various options
- Choose your comfort seating



Chepstow Riser Recliner Chair

The luxurious cushioned Chepstow riser recliner offers extra back support.

The Chepstow uses deep lateral cushions to gently hold the back in a comfortable central position.

Optional extras

- Choose from a large choice of fabrics and colours
- Made to measure
- Dual or Single motors available
- Accessorise your chair with various options
- Choose your comfort seating



Rise & Recliners

Choose your posture perfect chair



Marbella

Button

The Marbella Riser Recliner is specially designed for improved lumbar support.

The Marbella is classically designed with a traditional button back, scroll arm and padded upholstered wings. The backrest is deep filled with firm cushioning for better lumbar support.

Optional extras

- Choose from a large choice of fabrics and colours
- Made to measure
- Dual or single motors available
- Accessorise your chair with various options
- Choose your comfort seating
- Complimentary furniture available



Hardwick

Button

An unmistakable traditional classic comprising of a soft fibre filled back cushion with 7 carefully positioned buttons to emulate style, comfort and stunning looks, This is a timeless design that would compliment any room.

Optional extras

- Choose from a large choice of fabrics and colours
- Made to measure
- Dual or single motors available
- Accessorise your chair with various options
- Choose your comfort seating
- Complimentary furniture available



Newark

Button

An unmistakable traditional classic comprising of a soft fibre filled back cushion with 7 carefully positioned buttons to emulate style, comfort and stunning looks, This is a timeless design that would complement any room.

Optional extras

- Choose from a large choice of fabrics and colours
- Made to measure
- Dual or single motors available
- Accessorise your chair with various options
- Choose your comfort seating
- Complimentary furniture available



Rise & Recliners

Made to measure



Rimini

Waterfall

The Rimini is our most popular riser recliner chair.

The waterfall back offers the ultimate in comfort, three deeply soft cushions support your head, neck and the full length of your back, nothing can match the relaxing comfort of this chair.

Optional extras

- Choose from a large choice of fabrics and colours
- Made to measure
- Dual or single motors available
- Accessorise your chair with various options
- Choose your comfort seating
- Complimentary furniture available



Henley

Waterfall

The Henley Riser Recliner offers a steadier grip when sitting or standing.

The Henley features our best-selling waterfall back with a wooden knuckle arm design, which provides a steadier grip.

Optional extras

- Choose from a large choice of fabrics and colours
- Made to measure
- A choice of various back cushion styles
- Dual or single motors available
- Choice of light, medium or dark wood knuckles
- Accessorise your chair with various options
- Choose your comfort seating
- Complimentary furniture available



Olympia

Waterfall

The Olympia Riser Recliner comes in three chair styles with a choice of seven standard sizes making ordering the right chair quick and simple.

Its also features full length arm caps to protect and enhance the life of your chair.

Optional extras

- Choose from a large choice of fabrics and colours
- Made to measure
- A choice of various back cushion styles
- Dual or single motors available
- Pocket sprung seat cushions
- Complimentary furniture available



Rise & Recliners Wide Range

Choose your posture perfect chair



Bariatric

Waterfall

Bariatric seating solutions tailored to the user's requirements with features that deliver deep comfort and enhanced postural control.

Designed for comfort and pressure management, our Bariatric range comes with four mechanism choices, a wide range of weight limits, up to 445 Kg (70 stone) all with a waterfall back design which is useful for those with mild kyphosis, scoliosis and reduced muscle mass and a choice of interchangeable seat cushions with different pressure management options.

Optional extras

- Choose from a large choice of fabrics and colours
- Made to measure
- Dual or single motors available
- Accessorise your chair with various options
- Choose your comfort seating



Accessories & Upgrades

Add even more comfort and features to your new chair with these accessories and upgrades.



Neck Roll



Head Cushion



Anti-macassar



Arm Caps



Scatter / Lumbar Cushions



Extra Pocket



Rechargeable Battery Pack



Heat and Massage / Separate Heat Pad

Matching Furniture

Choose your posture perfect furniture

Most of our chairs are available with matching furniture



Customer Services and Contact Centre Team



Kevin Staniforth
Technical Department

- Father and Husband
- Loves holidays
- Loves more holidays



Danielle Moore
Personal Advisor

- Likes playing Mine craft
- Kitche Dancer
- Sleeps as much as a sloth



Leanne Squires
Product Advisor

- New mum to Rory
- Passion for sun holidays (Over 60 times!)
- Attended over 15 music concerts



Aaron Parkes
Personal Advisor

- Nickname Azbo
- Devoted dad to VinnyBo
- High voltage energy



Lisa Skidmore
Chair Specialist

- The party starter
- Smallest in the room
- Loudest in the room



Kath Inman
Personal Advisor

- Likes showing off her pearly whites
- Devoted Aunty
- Loves road trips



Lauren Hopper
Personal Advisor

- Loves a glass of wine
- Looking glamorous
- Loves driving my new car



Julie Jones
Powerchair/Wheel-chair Specialist

- Passion for fashion
- Devoted Nanny
- Loves travelling the world



Nichola Ryan
Scooter Specialist

- Loves swimming
- Adventures with the kids
- Holidays abroad



Jatinder Singh
Bed Specialist

- Wombwell pool champion
- Goes by "Yorkshire man with the Indian name"
- Fan of wildlife documentaries



Jennifer Goldstein
Personal Advisor - Bathrooms

- Mum and Wife
- I love family time, swimming, travelling, music festivals, cinema



Louise Williamson
Personal Advisor

- Quiz master
- Gym goer
- Bassline raver



Lisa Wilson
Personal Advisor

- Likes to drink (Gin)
- Nana to Freya
- Family orientated



Amie Desmond
Personal Advisor

- Keen green fingered gardener
- Loves indie and Motown music
- Attended over 20 music concerts and festivals
- Loves to pamper her chihuahua pooch Charlie



Louise Higgs
Customer Services

- Would love a dog, but can't because of work commitments
- Drives a Fiat 500
- Proud mum of a PE teacher



Simon Kaye
Personal Advisor

- Professional drummer in a past life
- Loves a whiskey
- Can talk for England, Europe and the world



Connor Lowford
Customer Services

- Rugby fan
- Owner of Bernard (giant St Bernard dog breed)
- Serial poser



Oliver Johnson
Customer service Manager

- Amateur golfer
- Co-host of the best wedding in West Yorkshire
- Cooks a mean brisket



Dan Bennett
Business Development Manager

- Amateur footballer
- Moves like John Travolta
- Loves to Moisturise with Clinique



Janine Workman
Office Manager

- Mum to Jake
- Very quiet until her second glass of wine (Gavi)
- Likes weekends away



Paul Johnson
Managing Director

- Father to Three, Oliver, Katie and Lewis
- Son, Brother and Uncle
- Loves Rugby

How to order

Ordering couldn't be easier, simply telephone our friendly call centre or email us with your request

Get in touch

Simply telephone our friendly call centre or email us with your request.

Telephone: 0800 110 5873

Email: sales@self-sure.co.uk

Website: www.self-sure.co.uk

Post: Send your order and cheque made payable to SelfSure to

SelfSure, Unit 3 The Gallery,
Concept Court, Manvers,
Wath-upon-Deerne S63 5DB

Payment Methods

0% or low rate finance
Debit / Credit Cards
Bank Transfer (BACS)
Cheque
Payment on Delivery

Simple Returns Policy

If you receive a product which is incorrect, faulty or damaged, SelfSure will replace the product or refund you in full.

If you receive a product which is correct, but is not suitable for you, please do not use it and put it back in its original packaging. If SelfSure receives it back in new condition, SelfSure will refund you in full, less any delivery or collection costs.

If a product is made to measure, unfortunately no refund can be given.

If you remove a product from its packaging or use a product which consequently may be perceived as contaminated or not clean, unfortunately no refund can be given.

SelfSure will always endeavour to act in a fair manner which results in a win/win outcome for all concerned.

Please feel free to ask for a copy of our full terms and conditions or visit our website www.self-sure.co.uk



Any questions?

Contact our friendly call centre team on

Freephone:
0800 110 5873

Pricing Policy

All specifications and dimensions quoted in this brochure or separate price list are correct at the time of going to press. SelfSure reserves the right to amend prices as and when necessary. The exact price will be confirmed at the time of ordering.

Products used as studio props, for purposes of photography and illustration, are not included the price.

All prices are plus postage and packaging.

Other products and services

A pro-active approach to lifestyle changes



Bath Lift



Personal Care & Comfort



Easy Access Bathrooms,
Wetrooms & Walk-In Showers



Scooters



Stairlifts



Power Chairs



Wheel Chairs



Walking Aids